

## Latest Innovations

Innovative solutions developed across all areas of technology.

Product Catalogue

Bran Finisher

SE-BF - 4010  
SE-BF - 5012

# Technological Advantages

## Across All Markets and Sectors

### SE-BF BRAN FINISHER - APPLICATION OVERVIEW

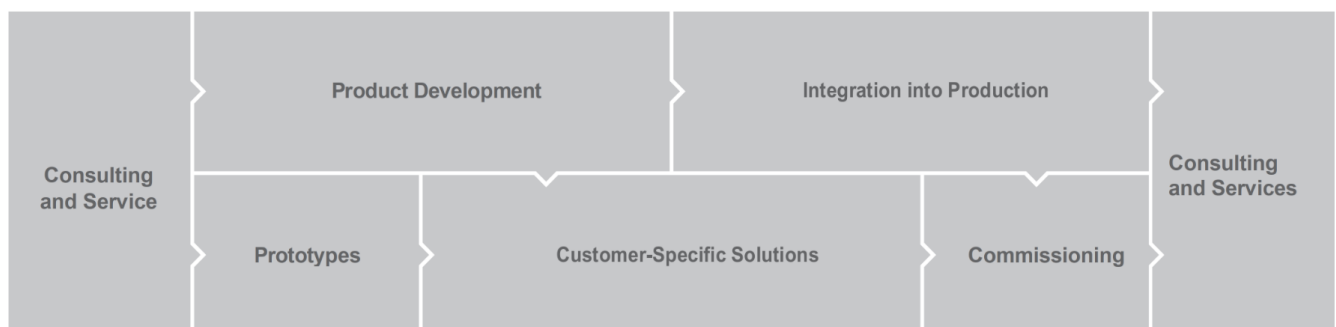
The SE-BF Bran Finisher is designed to maximize flour recovery by efficiently separating residual flour particles from bran after the milling and sieving processes. It plays a crucial role in modern milling lines by gently processing bran material to release trapped endosperm without damaging the bran structure. This controlled finishing process improves overall flour yield, enhances production efficiency, and reduces product loss. Thanks to its optimized rotor and impact design, the SE-BF Bran Finisher ensures uniform material flow and effective separation while maintaining stable and continuous operation. The machine is engineered to operate reliably under heavy-duty industrial conditions, offering low maintenance requirements and long service life. Its robust construction and precise mechanical balance make it an essential component for high-capacity flour and semolina mills aiming for maximum efficiency and consistent quality.

#### FEATURES & ADVANTAGES

- ▶ Efficient separation of residual flour from bran material
- ▶ Increases flour yield and reduces product loss
- ▶ Gentle finishing process without damaging bran structure
- ▶ Optimized rotor design for stable and uniform operation
- ▶ Supports higher milling efficiency and production performance
- ▶ Continuous operation suitable for industrial milling lines
- ▶ Robust and durable construction for long service life
- ▶ Low energy consumption and reduced operating costs
- ▶ Easy maintenance and reliable performance
- ▶ Compact design for easy integration into existing milling systems

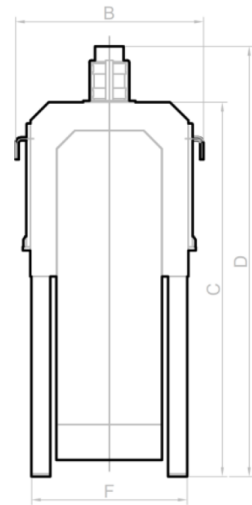
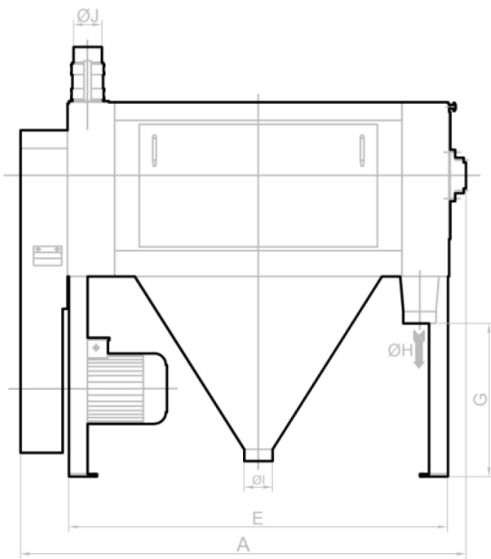
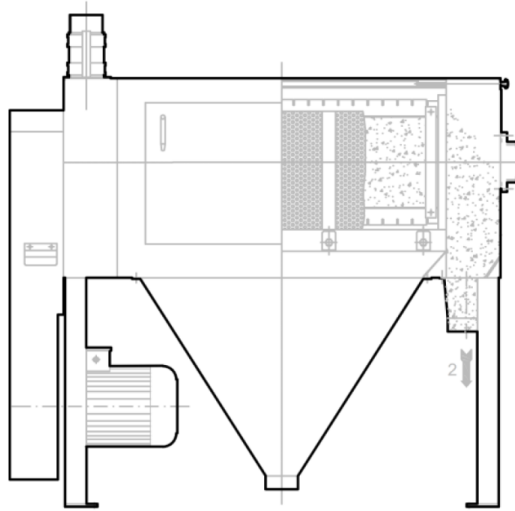
#### APPLICATION FIELDS

- ▶ Flour mills
- ▶ Semolina plants
- ▶ Whole wheat flour mills
- ▶ Bread crumb (galeta) mills
- ▶ Corn flour mills
- ▶ Pasta production facilities
- ▶ Grain and cereal processing plants



# Technical Table

## Bran Finisher



MODEL MODELE	DIMENSIONS mm.										TECHNICAL FEATURES CARACTERISTIQUES TECHNIQUES				
	A	B	C	D	E	F	G	øH	øI	øJ	Capacity Capacité t/h	Motor Moteur Kw	Weights - Poids Kg		Gross volume Volume sous emballage m³
													Net	Gross-Brut	
SE-BF - 4010	1680	730	1590	1890	1410	410	785	120	120	120	1,5-1,8	5,5-7,5	464	657	4
SE-BF - 5012	1890	820			1610	660	650	150			150	2-2,4	7,5-11	560	780

# SEDIROGLU GROUP DELIVERS COMPLETE SOLUTIONS ACROSS VARIOUS INDUSTRIES, COMBINING DEEP TECHNICAL EXPERTISE WITH A DIVERSE AND EXTENSIVE PRODUCT RANGE TO MEET A WIDE SPECTRUM OF CUSTOMER NEEDS.

FACING A DEVELOPMENT CHALLENGE? WE PROVIDE THE SOLUTION.  
AT SEDIROGLU GROUP, OUR EXPERIENCED R&D TEAM IS COMMITTED TO CONTINUOUS IMPROVEMENT.  
MANY INDUSTRY INNOVATIONS HAVE ORIGINATED FROM OUR COMPANY.  
WE ARE DRIVEN BY A FORWARD-THINKING MINDSET AND A PIONEERING SPIRIT IN EVERY STEP WE TAKE.

## CONTACT – WORLDWIDE

With 12 branches around the world and marketing teams in over 70 countries, we provide you with outstanding service worthy of a technology leader.

We look forward to hearing from you!

<https://sedirolugroup.com/contact>



## AT YOUR SERVICE 24/7 – OUR VIRTUAL BOOTH

With impressive features like animated shots, clickable hotspots, and rotatable 3D models, we are confident our online presentations will truly impress you.

<https://sedirolugroup.com/products>



## DISCOVER MORE ABOUT THIS PRODUCT

Scan the QR code to access detailed technical specifications, application insights, high-quality visuals, and interactive digital content related to this product.

<https://sedirolugroup.com/products/bran-finisher>



HEAD OFFICE:  
**SEDIROGLU GROUP**  
Turkey, Çorum  
T +90 541 620 03 22  
E Mail : [info@sedirolu.com](mailto:info@sedirolu.com)  
E Mail : [info@sedirolugroup.com](mailto:info@sedirolugroup.com)

[www.sedirolugroup.com](http://www.sedirolugroup.com)

**Sedirolu**  
GROUP machine