

## Latest Innovations

Innovative solutions developed across all areas of technology.

Product Catalogue

Mono Cyclone

SE-MNC-25  
SE-MNC-30  
SE-MNC-35  
SE-MNC-40  
SE-MNC-50

# Technological Advantages

## Across All Markets and Sectors

### SE-MNC MONO CYCLONE- APPLICATION OVERVIEW

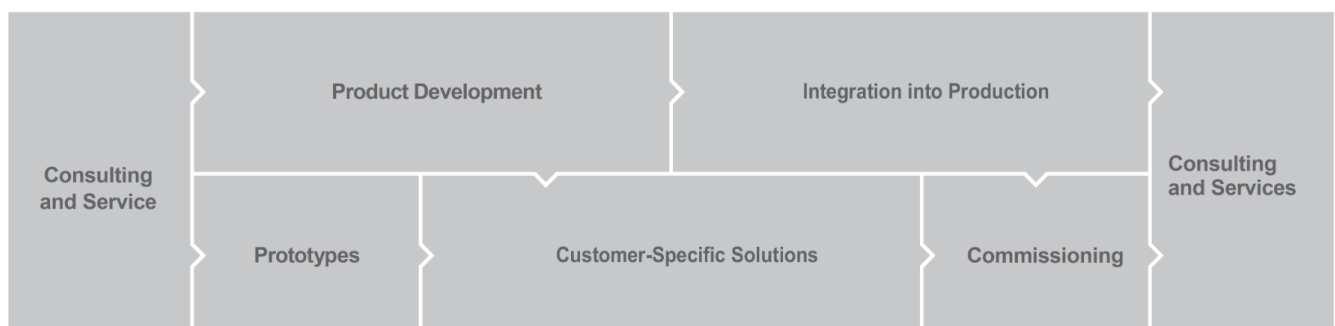
The SE-MNC Mono Cyclone is a high-efficiency centrifugal pre-separation unit designed to remove granular waste and coarse particles from dust-laden air before it reaches filtration systems. Installed between processing machines and filters, the Mono Cyclone protects filter bags, stabilizes airflow, and significantly reduces dust load in industrial aspiration lines. Operating with a tangential air inlet, the SE-MNC Mono Cyclone creates a controlled rotational airflow inside its cylindrical body. Centrifugal force drives heavier particles such as grain fragments, husk pieces, straw particles, stone residues, and coarse dust toward the internal walls. These particles lose velocity, slide down the conical section, and are discharged through a rotary airlock valve into a waste bunker, while cleaned air exits from the top outlet toward the filter system. The SE-MNC Mono Cyclone is widely used in flour mills, grain cleaning and storage silos, semolina plants, corn flour mills, feed factories, cement plants, and recycling facilities. By preventing granular material from reaching filter bags, it extends filter life, reduces operating costs, and ensures clean, stable, and uninterrupted industrial operation.

#### FEATURES & ADVANTAGES

- ▶ Efficient centrifugal separation of granular and coarse particles
- ▶ Protects filter bags by reducing dust and particle load
- ▶ Stable airflow balance between machine and filtration system
- ▶ Heavy-duty steel body for continuous industrial operation
- ▶ Low maintenance design with long service life

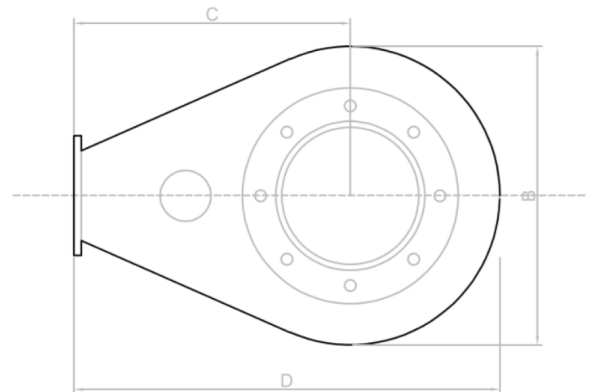
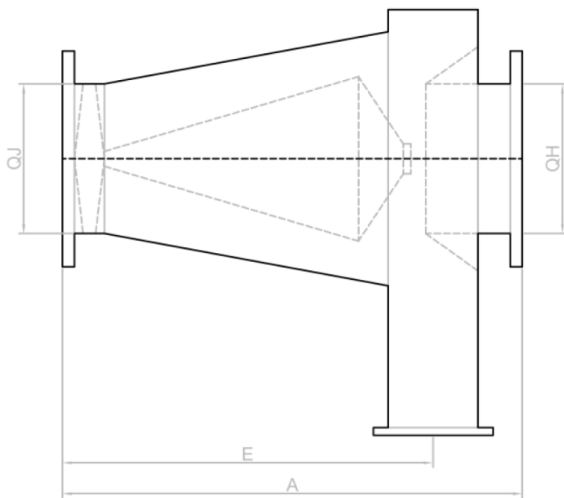
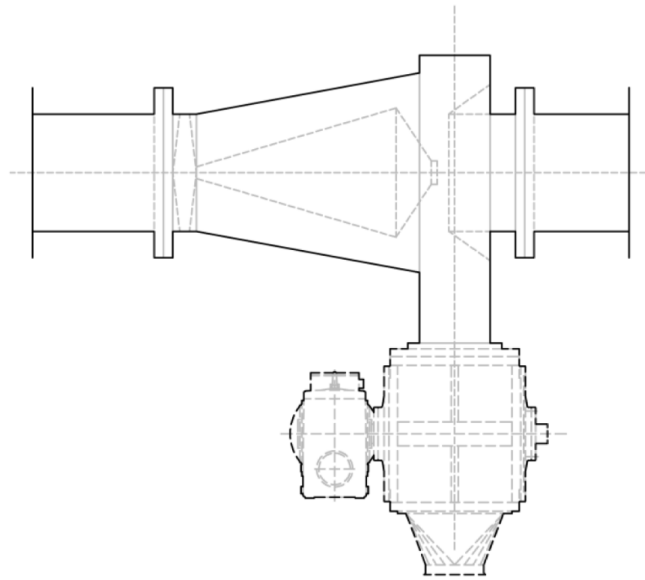
#### APPLICATION FIELDS

- ▶ Flour mills and wheat flour production plants
- ▶ Grain cleaning and conditioning systems
- ▶ Semolina (durum wheat) processing plants
- ▶ Corn flour and maize milling facilities
- ▶ Feed production factories
- ▶ Cement manufacturing plants
- ▶ Recycling and waste separation facilities
- ▶ Dust aspiration and filtration systems
- ▶ Silo loading and unloading lines
- ▶ Silo loading and unloading lines
- ▶ Industrial material handling systems



# Technical Table

Mono Cyclone



**Sediroglu**  
SOLUTIONS

MODEL MODELE	DIMENSIONS mm.								TECHNICAL FEATURES CARACTERISTIQUES TECHNIQUES		
	A	B	C	D	E	F	øH	øJ	Weights - Poids Kg		Gross volume Volume sous emballage m <sup>3</sup>
									Net	Gross-Brut	
SE-MNC -25	810	510	450	705	675	132x128	250	250	20	84	0,8
SE-MNC -30	920	600	540	840	780	142x133	300	300	46	126	1,1
SE-MNC -35	1035	685	630	1120	975	155x150	350	350	65	169	1,6
SE-MNC -40	1170	770	720	1105	1010	170x165	400	400	84	202	2
SE-MNC -50	1525	990	885	1385	1355	170x165	500	500	125	303	3,6

# SEDIROGLU GROUP DELIVERS COMPLETE SOLUTIONS ACROSS VARIOUS INDUSTRIES, COMBINING DEEP TECHNICAL EXPERTISE WITH A DIVERSE AND EXTENSIVE PRODUCT RANGE TO MEET A WIDE SPECTRUM OF CUSTOMER NEEDS.

FACING A DEVELOPMENT CHALLENGE? WE PROVIDE THE SOLUTION.  
AT SEDIROGLU GROUP, OUR EXPERIENCED R&D TEAM IS COMMITTED TO CONTINUOUS IMPROVEMENT.  
MANY INDUSTRY INNOVATIONS HAVE ORIGINATED FROM OUR COMPANY.  
WE ARE DRIVEN BY A FORWARD-THINKING MINDSET AND A PIONEERING SPIRIT IN EVERY STEP WE TAKE.

## CONTACT – WORLDWIDE

With 12 branches around the world and marketing teams in over 70 countries, we provide you with outstanding service worthy of a technology leader.

We look forward to hearing from you!

<https://sedirolugroup.com/contact>



## AT YOUR SERVICE 24/7 – OUR VIRTUAL BOOTH

With impressive features like animated shots, clickable hotspots, and rotatable 3D models, we are confident our online presentations will truly impress you.

<https://sedirolugroup.com/products>



## DISCOVER MORE ABOUT THIS PRODUCT

Scan the QR code to access detailed technical specifications, application insights, high-quality visuals, and interactive digital content related to this product.

<https://sedirolugroup.com/products/mono-cyclone>



HEAD OFFICE:  
**SEDIROGLU GROUP**  
Turkey, Çorum  
T +90 541 620 03 22  
E Mail : [info@sedirolu.com](mailto:info@sedirolu.com)  
E Mail : [info@sedirolugroup.com](mailto:info@sedirolugroup.com)

[www.sedirolugroup.com](http://www.sedirolugroup.com)

**Sedirolu**  
GROUP machine